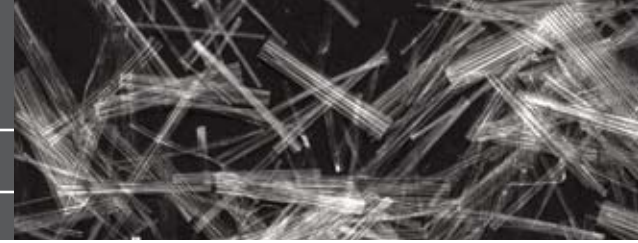


Product Information

GENESIS® XF FIBER

Fibrillated Fiber Reinforcement



PRODUCT DESCRIPTION:

GENESIS® XF is an enhanced Fibrillated Concrete Fiber that features our patent pending TUFFINISH TECHNOLOGY™. This unique technology creates a micro-reinforcement system that increases your overall fiber count, while providing outstanding residual strength. These micro-mechanics allow you to achieve maximum results with a diminished dosage as compared to regular fibrillated products, and can save you up to 33% on every treated yard. **GENESIS® XF** Concrete Fibers are specifically engineered for use in concrete as secondary reinforcement and for the purpose of controlling plastic and temperature shrinkage, as well as settlement cracking.

COMPLIANCE:

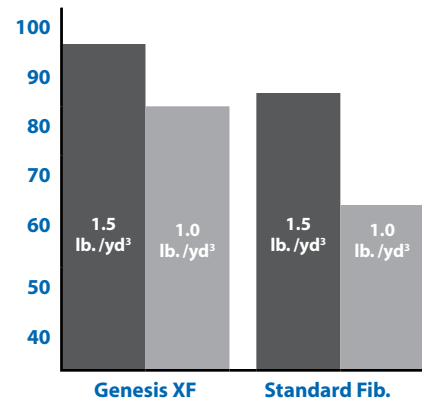
GENESIS® XF Concrete Fibers are manufactured in a UL approved facility, and comply with National Building Codes and ASTM C1116 Type III 4.1.3, ASTM C1116 Performance Level 1 Residual Strength.

PHYSICAL PROPERTIES:

Absorption.....	Nil
Specific Gravity.....	0.91
Fiber Length.....	0.5"-0.75" (12mm-18mm)
Thermal Conductivity.....	Low
Acid & Salt Resistance.....	High
Modulus (Young's).....	0.5 (3.5 kN/mm2)
Melt Point.....	324°F (162°C)
Ignition Point.....	1,100°F (593°C)
Electrical Conductivity.....	Low
Alkali Resistance.....	Alkali Proof

FEATURES & BENEFITS

- Replacement for traditional concrete reinforcement
- Inhibits and controls the formation of cracking in concrete
- Improves impact, shatter and abrasion resistance
- Reduces plastic shrinkage and settlement cracking
- Enhanced durability and toughness
- Reduces water migration and damage from freeze/thaw
- Improved green strength



PSCR DATA

MANUFACTURER'S RECOMMENDATIONS:

GENESIS® XF Fibrillated Concrete Fibers should be added at a dosage rate of 0.067% by volume, or up to 0.1%, unless otherwise specified.

GENESIS® XF Concrete Fibers are packaged in premeasured, ready for concrete, degradable bags, designed to be introduced into the mix at any time before during or after the Ready-Mixed Concrete. PGI recommends proper mixing procedures as specified in ASTM C 94.

DOSAGE RATES: XF Fibrillated fibers.....1.0 lbs./Yd³≥ (0.6 kg m³≥)

PLACEMENT AND FINISHING:

PGI recommends that the standard practices detailed in ACI 302 for placing, finishing and curing concrete be followed when using **GENESIS® XF** Concrete Fibers.

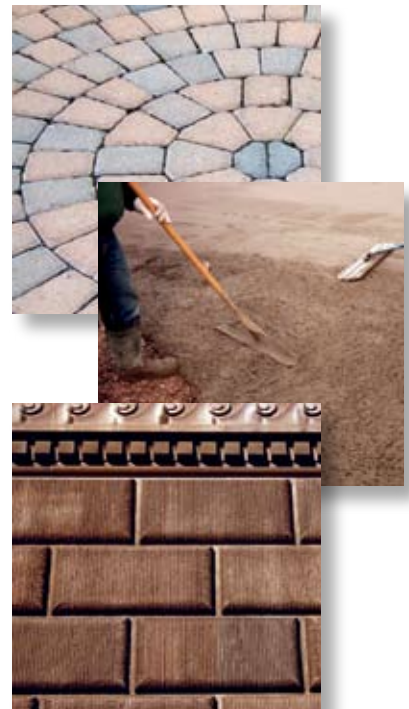
PGI hopes the information given herein is helpful. All information is based on test data and knowledge considered to be true and accurate, and is offered for the user's consideration, investigation and verification.

ARCHITECTURAL SPECIFICATION:

Use only **XF** fibrillated polypropylene fibers, with TUFFINISH TECHNOLOGY™, specifically engineered and manufactured for use in concrete as secondary reinforcement (**GENESIS® XF**). Fibers are used for the control of cracking due to drying shrinkage, thermal expansion and contraction, lowered permeability, increase impact, abrasion and shatter resistance. Fiber manufacturer must be in compliance with applicable building codes and ASTM C1116, Type III, 4.1.3. Fibrous concrete reinforcement as manufactured by Polymer Group, Inc. 701 E. Avenue A, Kingman, Kansas, USA, 67068. Phone (800) 821-4391, Fax: (620) 532-2571.

TYPICAL APPLICATIONS:

- Residential & commercial slabs on ground
- Statuaries
- Marine products
- Precast Products
- White topping/overlays
- Agriculture products
- Stucco
- Wall systems



WARRANTY AND LIMITATION OF LIABILITY:

Product sold hereunder is of merchantable quality and conforms to seller's standards and specifications. Seller's sole liability for claim shall be limited to replacement of defective or nonconforming product. In no event shall seller be liable for any special, incidental, consequential, or exemplary damages. PGI recommends that each user determine the suitability of the product(s) for their own particular application.

PGI Performance Concrete Fibers
Customer Service: (800) 821-4391

WESTERN DIVISION
Clearfield, UT 84016

CORPORATE DIVISION
Kingman, KS 67068

EASTERN DIVISION
Guntown, MS 38849